

AKIKO SASAGAWA

## **Shrine & Temple which works were dedicated to / Antique dealers**

---

- **Rinzai sect - Entsu Yamamotozan - Koseiji temple**  
(臨濟宗 円通山本山 興聖寺)
- **Shingon sect - Toyozanha - Daihonzan - Gokokuji Templ**  
(真言宗豊山派 大本山 護国寺)
- **Soto-shu - Daihonzan -Sojiji Ancestral Temple**  
(曹洞宗大本山総持寺祖院)
- **Nakanishi Shohoken, Antique Dealer**  
(古美術商 / 中西松豊軒)

• **Rinzai sect - Entsu Yamamotozan - Koseiji Temple** 臨濟宗 円通山本山 興聖寺  
(Overview of Temple)

Koseiji Temple was founded in 1603 by a monk named Kiin-En-ni and was built by Furuta Oribe.

Furuta Oribe was a disciple of Sen no Rikyu, a warrior tea master. The "Tang Dynasty Record of the Western Regions," which is included in the Kosei-ji Temple's Koseiji-ji Complete Buddhist Sutras, is said to be the world's oldest manuscript (as described by Professor Ochiai of the International Graduate School of Buddhism), and the "Tosotsu-Mandala" is recognized as an important cultural property and is currently maintained at the museum.

(A copy of this huge 4-meter wide and 6-meter-high scroll is on display in the Nirvana Hall, where a solo exhibition is being held.)



• Rinzai sect - Entsu Yamamotozan - Koseiji Temple 臨濟宗 円通山本山 興聖寺

The work was displayed in the main hall



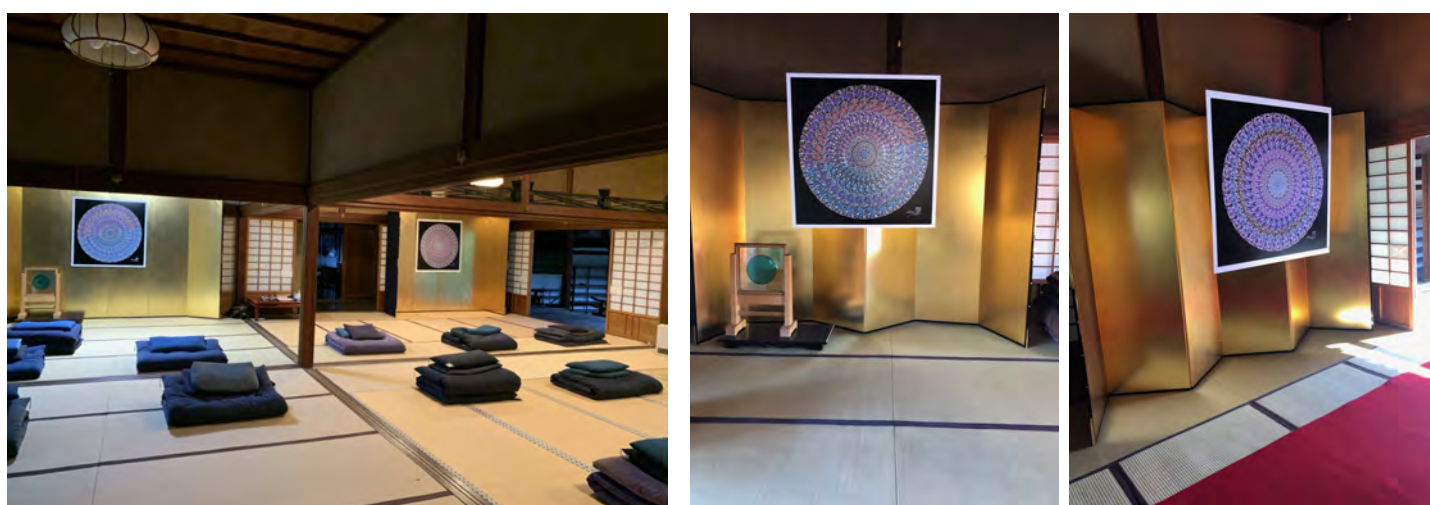
Work: Upper work: One of the 14 votive works 37cm x Width 37cm x Depth 3cm  
Lower piece: Ice Goddess Height 120cm x Width 120cm x Depth 3cm

• **Rinzai sect - Entsu Yamamotozan - Koseiji Temple** 臨濟宗 円通山本山 興聖寺

"Akiko Mandala Zazen" is held as one of the Zen meditations practices (offered as a paid content).



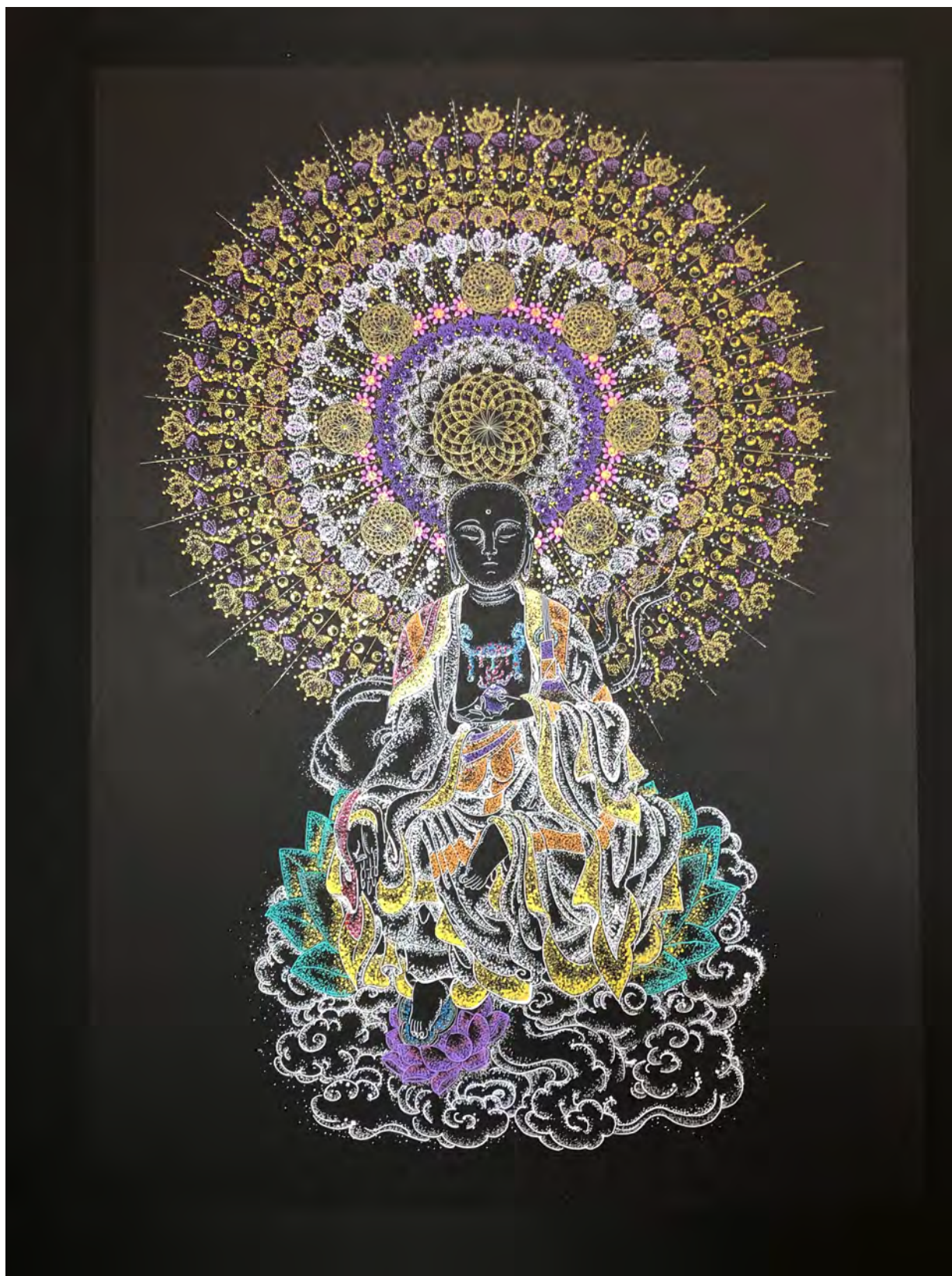
- Currently 14 works are dedicated as Dharma tools for zazen in 2018.



- 2 digital lithograph works were dedicated in 2019 (for Buddhist memorial services)

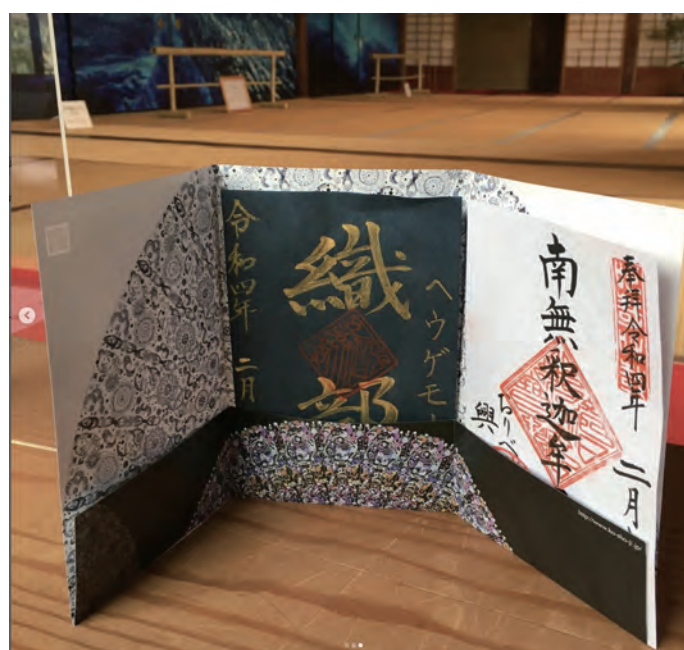
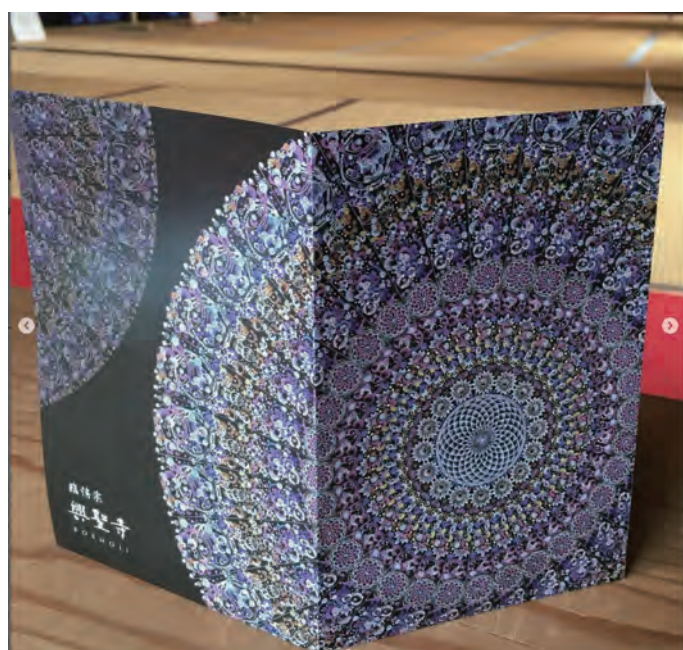
• Rinzai sect - Entsu Yamamotozan - Koseiji Temple 臨濟宗 円通山本山 興聖寺

• Jizo Mandala were dedicated in 2019 (currently not open to public as a treasure trove)



• Rinzai sect - Entsu Yamamotozan - Koseiji Temple 臨濟宗 円通山本山 興聖寺

Akiko's artwork used as Cover of Red Seal at public opening of Jizo Mandala in 2022



• **Rinzai sect - Entsu Yamamotozan - Koseiji Temple** 臨濟宗 円通山本山 興聖寺

• Akiko Sasagawa's solo exhibition "Each Universe" at 涅槃堂 (December 2 - 4, 2022) Kyoto, where nature is interwoven with the fragrance of autumn leaves. Akiko Sasagawa's solo exhibition "Each Universe" will be held at a Zen space that is not usually open to the public. Akiko Sasagawa, an Artist who draws mandalas from a new

THE VARIOUS UNIVERSES  
AKIKO SASAGAWA SOLO EXHIBITION  
2022年12月2日(金)～12月4日(日) 9時～17時  
入場無料 京都 / 臨濟宗 興聖寺 (涅槃堂)



～それぞれの宇宙展～  
笹川 亜紀子 個展

自然が織りなす、紅葉が香る京都。  
普段は一般公開を許されない、  
禪の空間において「～それぞれの宇宙展～」と  
題した個展を開催致します。

曼荼羅を、現代という時代に合わせ新たな視点で描く  
アーティスト・笹川亜紀子の繊細な点描作品が  
興聖寺涅槃堂を色彩豊かに彩ります。

日時：2022年12月2日(金)～12月4日(日)9時～17時  
会場：京都 / 臨濟宗 興聖寺 (涅槃堂)  
<http://www.ko-sho-ji.jp/>



住所：  
京都市上京区堀川通  
寺之内上ル二丁目  
上天神町647  
天神公園前バス停より  
徒歩1分



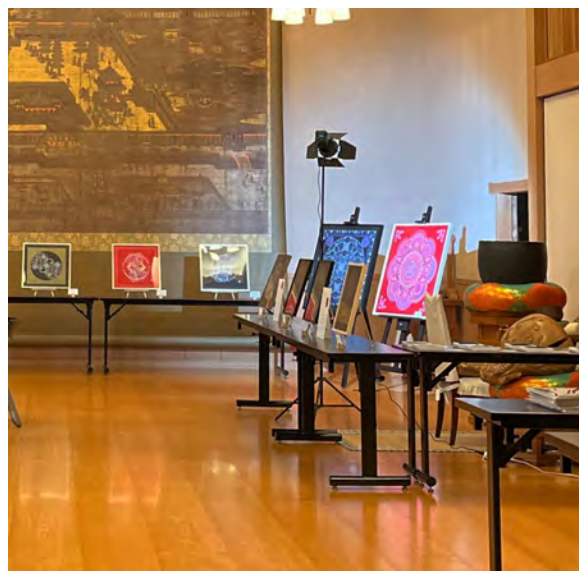
3日間在廊し、皆さまのお越しをお待ちしております。凛とした空間に配置される作品を是非現に来てください。(笹川亜紀子)





• **Rinzai sect - Entsu Yamamotozan - Koseiji Temple** 臨濟宗 円通山本山 興聖寺

• Akiko Sasagawa's solo exhibition "Each Universe"



• **Rinzai sect - Entsu Yamamotozan - Koseiji Temple** 臨濟宗 円通山本山 興聖寺

• Akiko Sasagawa's solo exhibition "Each Universe"



• **Rinzai sect - Entsu Yamamotozan - Koseiji Temple** 臨濟宗 円通山本山 興聖寺

- Akiko Sasakawa's solo exhibition "Doors to the Heart" at 涅槃堂

(November 23 - 26, 2023)

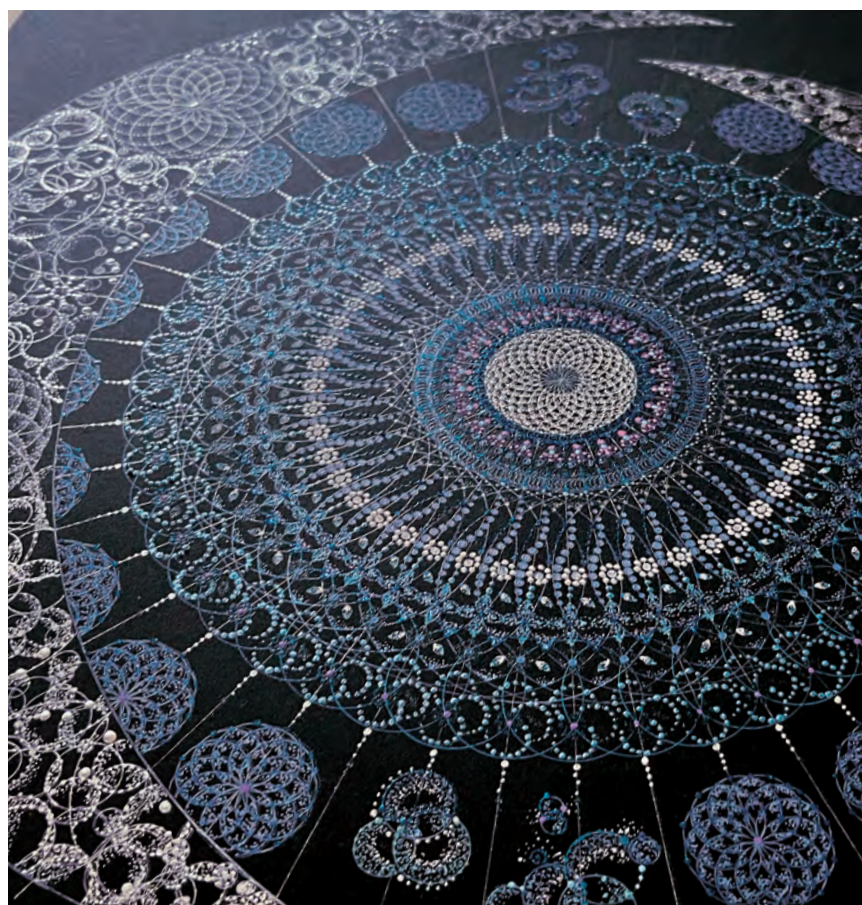
Akiko Sasagawa will hold a solo exhibition at 涅槃堂 again this year as her triumphant return from her New York exhibition. This year, during the time of the exhibition, the Kyoto City Tourism Association will hold a special exhibition and lighting up of Koseiji Temple in Nishijin, Kyoto.

[https://ja.kyoto.travel/event/single.php?event\\_id=8765](https://ja.kyoto.travel/event/single.php?event_id=8765)

Organizer: Rinzai Shu Koseiji Temple

Operated by August Planning Work, Inc.

Cooperation: Fujiwara Produce Co.



～心の扉展～ 笹川 亜紀子 NY 凱旋企画  
**SECRET DOOR TO MY HEART**  
AKIKO SASAGAWA SOLO EXHIBITION

入場無料

2023年11月23日(木)～11月26日(日) 9時～17時 ※最終日16時最終受付

京都 / 臨濟宗 興聖寺 (涅槃堂)

<https://www.cosmo-meditation.com>

- **Toyozan School of Shingon Sect, Daihonzan Gokokuji Temple**

真言宗豊山派 大本山 護国寺

(Overview of Temple)

The Shingon sect is a Mahayana Buddhist sect founded by Kukai (Kobo Daishi) in the early 9th century (Heian period).

The temple was founded in 1681 by Tsunayoshi Tokugawa, the fifth Shogun, in accordance with the wishes of his birth mother, Keishoin, and is a temple of prayer. The main deity is the Nyoirin Kannon (Goddess of Mercy). Later, the temple became a prayer temple for the shoguns to pray for the longevity of their military fortunes.

The main hall, built in the Genroku era (1688-1704), and the Gekkouden Hall, moved in 1928, are both designated as national important cultural properties. There are many other cultural properties designated by the government.

After the Meiji period (1868-1912), the relations with Tokugawa family ended and the temple built a cemetery for the general public. The graves of Sanjo Sanetomi, Yamagata Aritomo, Tanaka Mitsuaki, Okuma Shigenobu, and others are located here.



• **Toyozan School of Shingon Sect, Daihonzan Gokokuji Temple**

真言宗豊山派 大本山 護国寺

We are in the process of dedicating two mandalas (Kongokai and Tainzo mandalas) that we exhibited in New York at the entrance of the shrine office of Gokokuji Temple.



## Akiko Sasagawa's work as an interior designer

- **Renewal design of the Hakusan Storage at the Sojiji Temple, the head temple of the Soto sect of Zen Buddhism.**

The main temple of the Soto sect of Zen Buddhism, Omotozan Sojijiji Temple, was founded in 1321 by Zenji Yinzan Shaojin in the first year of the Genheng era (1321), approximately seven hundred years ago. The following year, in the 2nd year of Genko, Emperor Godaigo, who took refuge in the Zen master, issued an imperial edict designating Sochi-ji Temple as "The First Dojo of the Soto Giftshi Shisei".

The temple's fortunes continued to grow, and it had more than 16,000 temples throughout Japan, but unfortunately, on April 13, 1898, Most of the Shichido temple was destroyed by fire. The center of missionary work was moved to Tsurumi, Yokohama City, Kanagawa Prefecture. The temple was rebuilt one after another as an ancestral hall, and in addition to Dento-in, Jiunkaku, and the sutra library, which survived the fire, the seven halls were reconstructed in the temple's precincts, which cover an area of about 20,000 tsubo. The temple is now a sacred place, harmonized with the mountain, water and old trees, and has become a major sanctuary that evokes the scenic and ethereal atmosphere of the head temple of the Soto sect of Buddhism.

2001年(平成13年)8月2日(木曜日)

北 國 新 聞

くつろぎの場誕生  
 総持寺 蔵改装しギャラリー

門前町の曹洞宗大本山 九月初旬には文化勲章受  
 総持寺祖院の白山蔵を画 章者で書家の村上三島氏  
 廊に改装した「白山蔵ギ 作品展を計画してい  
 ャラリー」我達人」が一日、  
 オープンし「写真」氏  
 子総代や雲水ら約五十人  
 が完成を祝った。  
 ギャラリーは、約二百  
 五十年前に建築された白  
 山蔵の一階部分の約九十  
 平方尺。展示スペースの  
 ほかにテーブルや炉、厨  
 房が設けられ、参詣者が  
 くつろぐことができる。

この日は落慶法要とテ  
 ープカットを行った後、  
 ギャラリーで祝賀会が開  
 かれた。

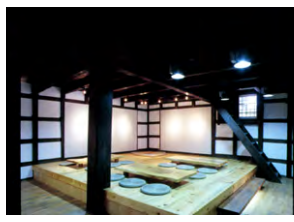


## Akiko Sasagawa's work as an interior designer

While it is rare for a woman to be involved in shrine and temple design, she was chosen to be in charge of the storage renewal design in recognition of her experience and accomplishments. She spent about a year designing with a local temple carpenter to revive the storage, which had been untouched until then, as a gallery.

She participated the ribbon-cutting ceremony at the opening of the new storage with Mr. Kanchu, the governor of the prefecture. She was interviewed by the Hokkoku Shimbun and foreign media.

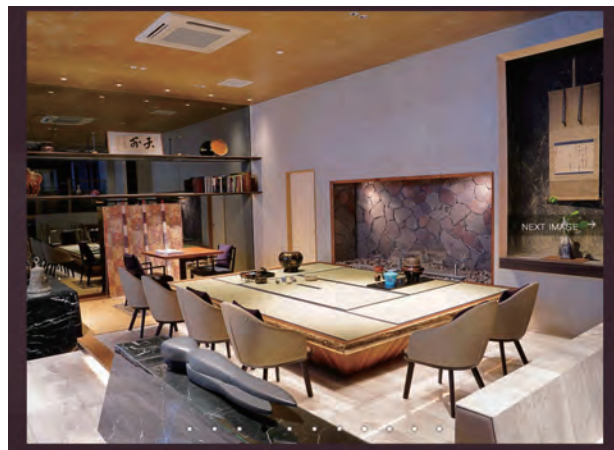
Since her grandfather was a temple carpenter, the local temple carpenter strongly encouraged her to take charge of the design.



• **Nakanishi Shohoken, Antique Dealer**

古美術商 / 中西松豊軒

(Excerpt from an article in Waraku magazine)



The Furumonzen and Shinmonzen areas are lined with antique stores and antique art stores. It is one of the most famous art streets in Japan, with more than 20 antique shops lining the 500-meter stretch from the Kamo River to Higashioji Dori. One of the shops is Nakanishi Shohoken, a long-established tea ceremony utensil shop established in 1907.

We deal in various masterpieces of Japanese and Western art, mainly tea ceremony art from the Momoyama to Edo periods, which attract even those who have never been interested in such art before," says Teruyuki Nakanishi, the fourth-generation owner of the shop.

In 2012, he opened a gallery next to the store to make it more accessible. In the fall of 2017, he opened "ART MON ZEN KYOTO," a luxury hotel that aims to fuse Japanese art and accommodations. However, Nakanishi, who is known as a revolutionary in Kyoto's antique art world, says that it is a bit different to only draw attention to new attempts.

He says, "If you are not serious about your business, it won't last. How do we make people understand what is valuable? Even though our methods have become more modern, we take pride in the fact that we will not lose when we deal in masterpieces. We would be happy if you become a fan of Nakanishi Shohoken after visiting various stores," says Nakanishi.



From tea ceremony utensils with Iemoto's calligraphy on the box to Kyoto-style ceramics by Nonomura Ninsei and contemporary art, Nakanishi Shohoken is committed to introducing Japanese beauty in a lighthearted manner that transcends tradition.

Nakanishi Shohoken is highly knowledgeable about tea ceremony utensils of various schools and ornamental ceramics and proposes art from a variety of perspectives. Many customers come from as far away as Tokyo. In the hope that visitors can enjoy a trip to Kyoto with authentic Japanese beauty, some of the artworks in the store are also displayed in the rooms of the neighboring hotel, "ART MON ZEN KYOTO".



(Currently, five works are under the management of the gallery.)

• **Nakanishi Shohoken, Antique Dealer**

古美術商 / 中西松豊軒

Akiko Sasagawa's solo exhibition will be held at Nakanishi Matsuhoken Gallery in April 2024.

